

A Letter to the Community

TPS SHOWS PROGRESS...

Today, the Ohio Department of Education releases its report card for public schools - and Toledo Public Schools has good news to share with the community.

The district has improved on the overall State Report Card, which means TPS has moved out of Academic Distress. Our progress is credited to the work of our students, teachers and staff, all of whom are making tremendous strides.

Our graduation rates continue to improve and our Early Childhood program has shown growth. We are pleased that the improvements in our internal data are beginning to show in the report card.

Toledo Public Schools welcomes transparency about its performance, but believes the State Report Card gives a woefully incomplete picture of public education in this and other urban districts.

Even with these results, the State Report Card remains overly broad and continues to fail to accurately capture our progress. That is why we feel compelled to tell a more complete story. The summary below is supported by a full set of performance data which can be found at www.tps.org.

Dr. Romules Durant

CEO/ Superintendent

Mrs. Stephanie Eichenberg

President, Board of Education

Mr. Bob Vasquez

Vice President, Board of
Education

Mr. Perry Lefevre

Board Member

Mrs. Polly Taylor-Gerken

Board Member

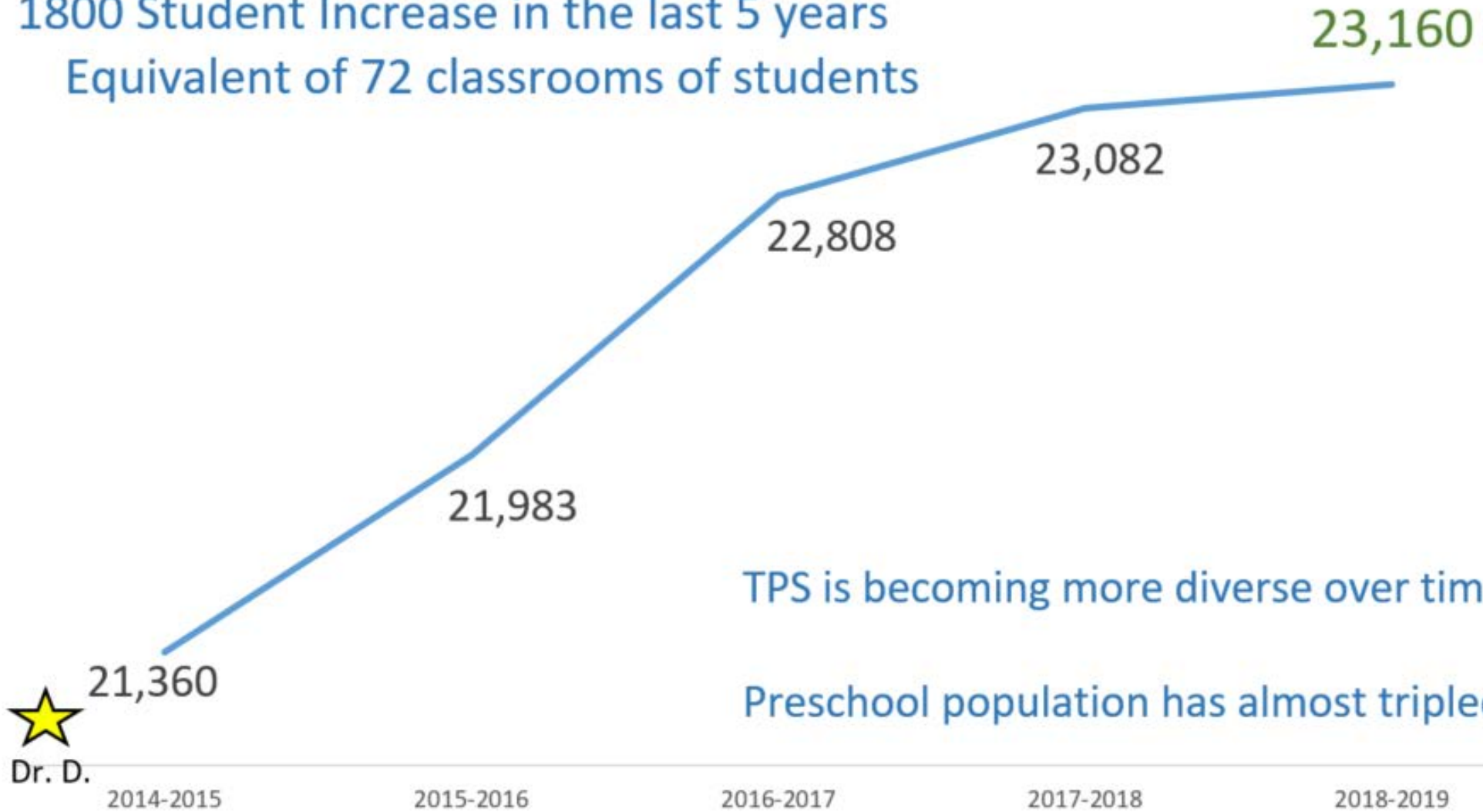
Mrs. Christine Varwig

Board Member



Student Enrollment

1800 Student Increase in the last 5 years
Equivalent of 72 classrooms of students



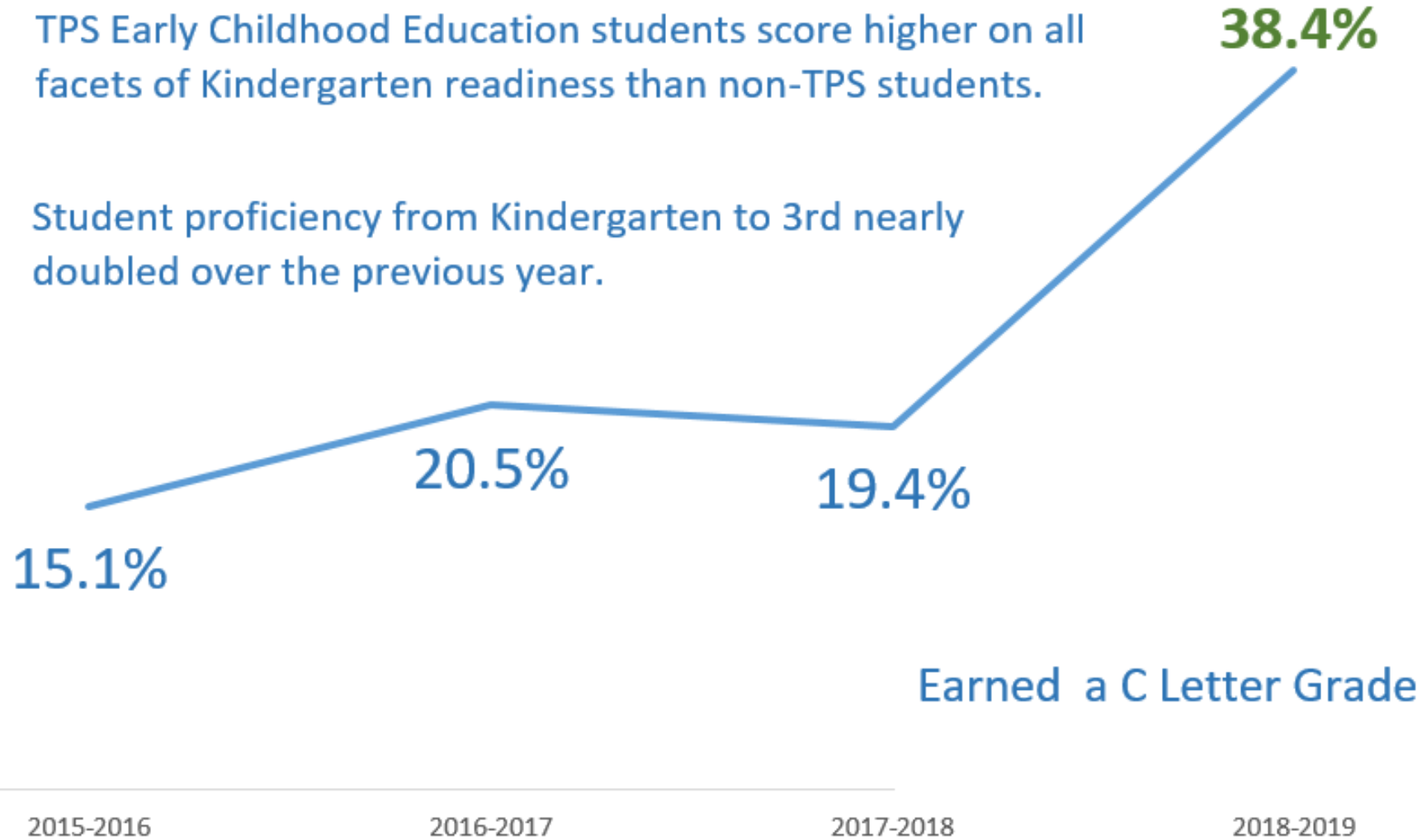
TPS is becoming more diverse over time

Preschool population has almost tripled

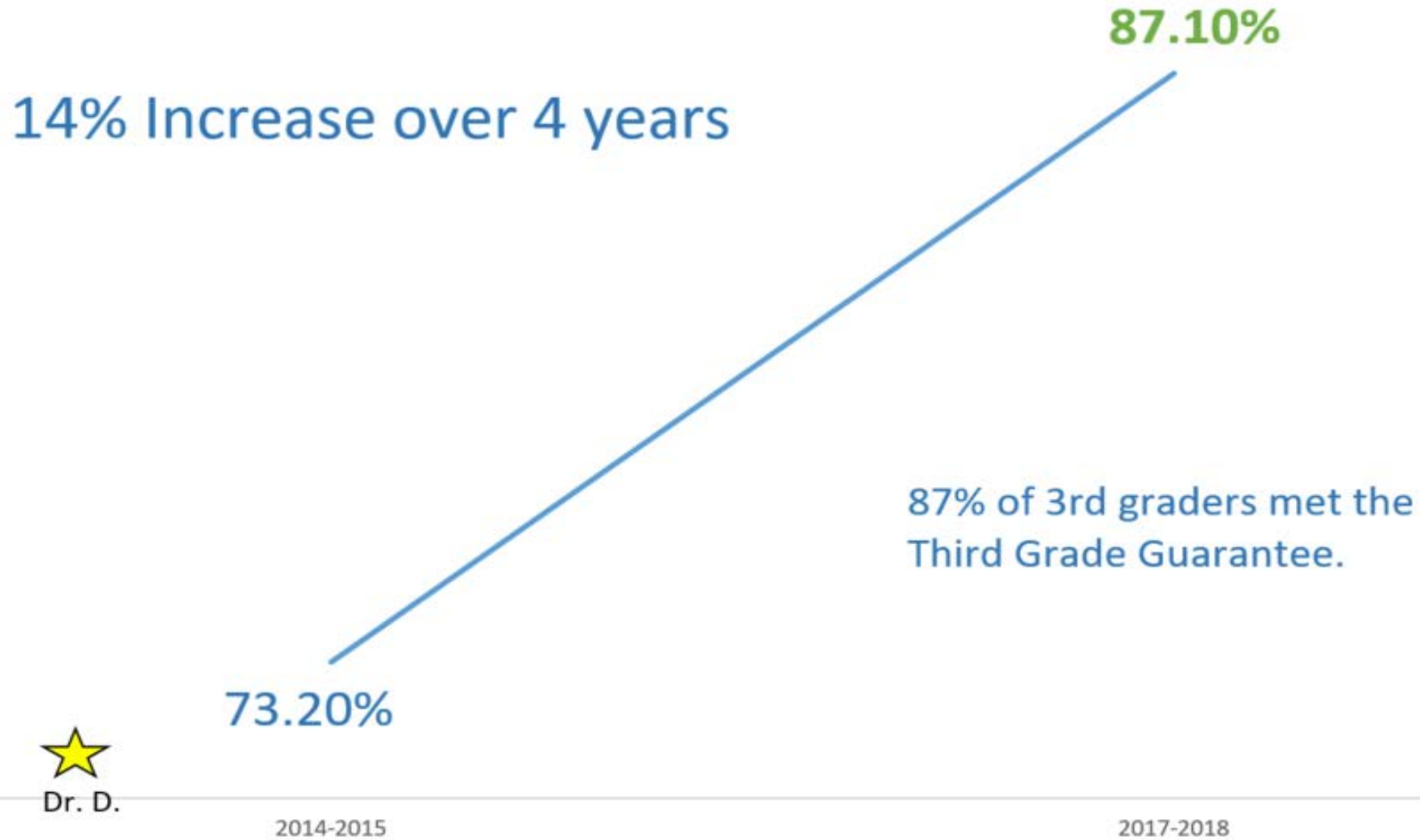
K-3 Literacy

TPS Early Childhood Education students score higher on all facets of Kindergarten readiness than non-TPS students.

Student proficiency from Kindergarten to 3rd nearly doubled over the previous year.



Third Grade Reading Guarantee



Outstanding School Achievements



Performance Index/ Achievement Growth

Jones Leadership	10.71
Chase STEM	7.88
MLK for Boys	7.74
Rogers HS	7.61
McKinley STEMM	7.43
Westfield/Robinson	6.75
Toledo Early College	6.57
Woodward	5.02



Value Added Gain Increases

Toledo Technology	4.8
Toledo Early College	3.6
Chase STEMM	3.4
Westfield/Robinson	2.0
MLK Academy for Boys	1.9
Beverly Elementary	1.8
Grove Patterson Academy	1.7
Oakdale Elementary	1.7



Value Added Grades

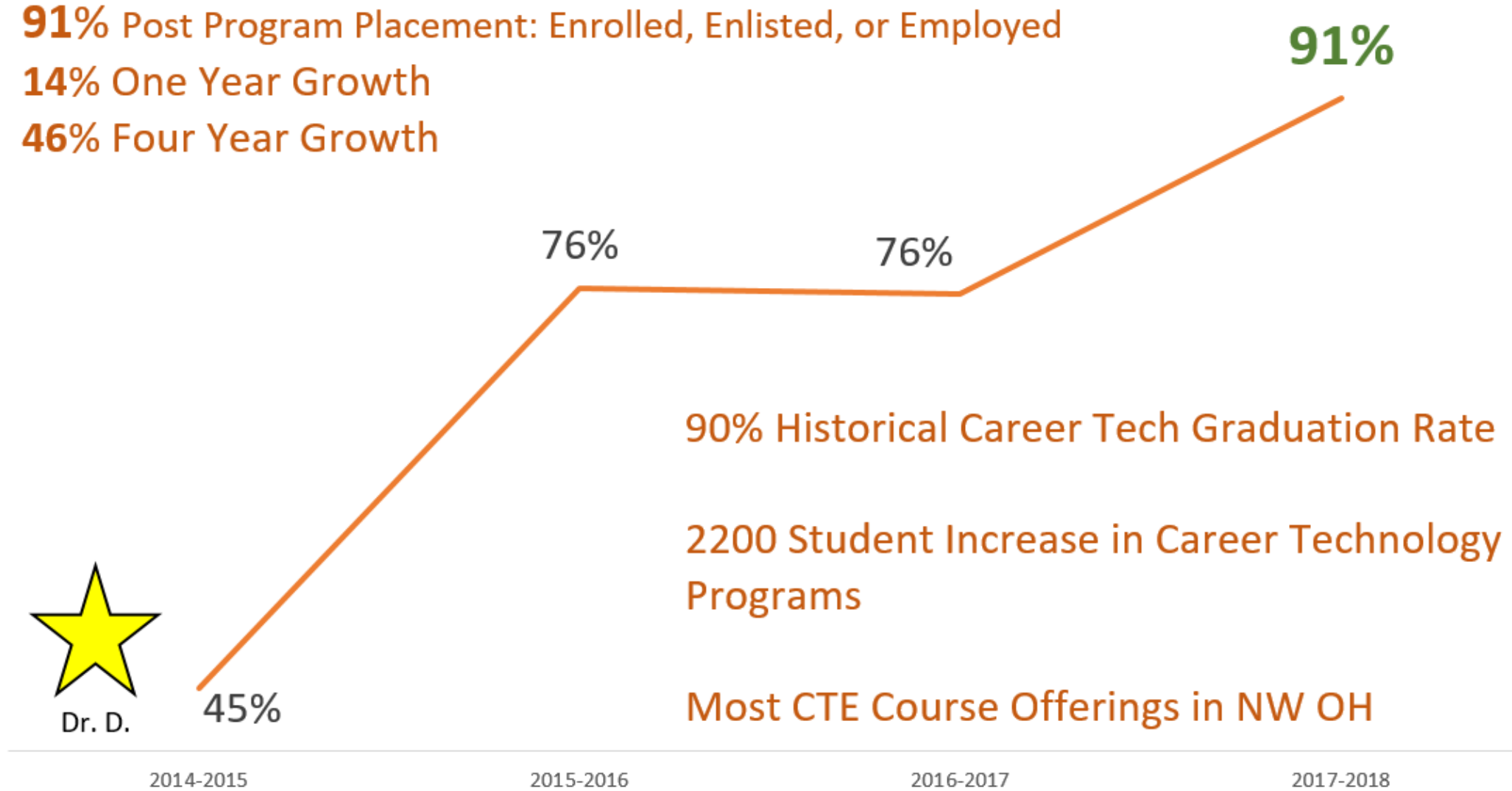
Chase STEM	A
Toledo Early College	A
Toledo Technology	A
Beverly Elementary	B
Burroughs Elementary	B
Elmhurst Elementary	B
Grove Patterson Academy	B
Harvard Elementary	B
Jones Leadership	B
MLK Academy for Boys	B
Oakdale Elementary	B
Old West End Academy	B
Westfield/ Robinson	B
Whittier Elementary	B

Career Technology Placement Rate

91% Post Program Placement: Enrolled, Enlisted, or Employed

14% One Year Growth

46% Four Year Growth



Dr. D.

45%

2014-2015

2015-2016

2016-2017

2017-2018

College & Career Ready



Dual Enrollment Credits

Dual enrollment and college credits earned continues to increase with over 27% of graduates earning credits.

5.4% increase over 3 years



Overall Prepared for Success

Overall score continues to rise with students taking advantage of both college & career opportunities in TPS.

4.2% Increase over 3 years



Outstanding Graduation Rate Increases

Jesup W. Scott HS	28.40%
Start HS	16.10%
Waite HS	7.5%
Woodward HS	4.7%

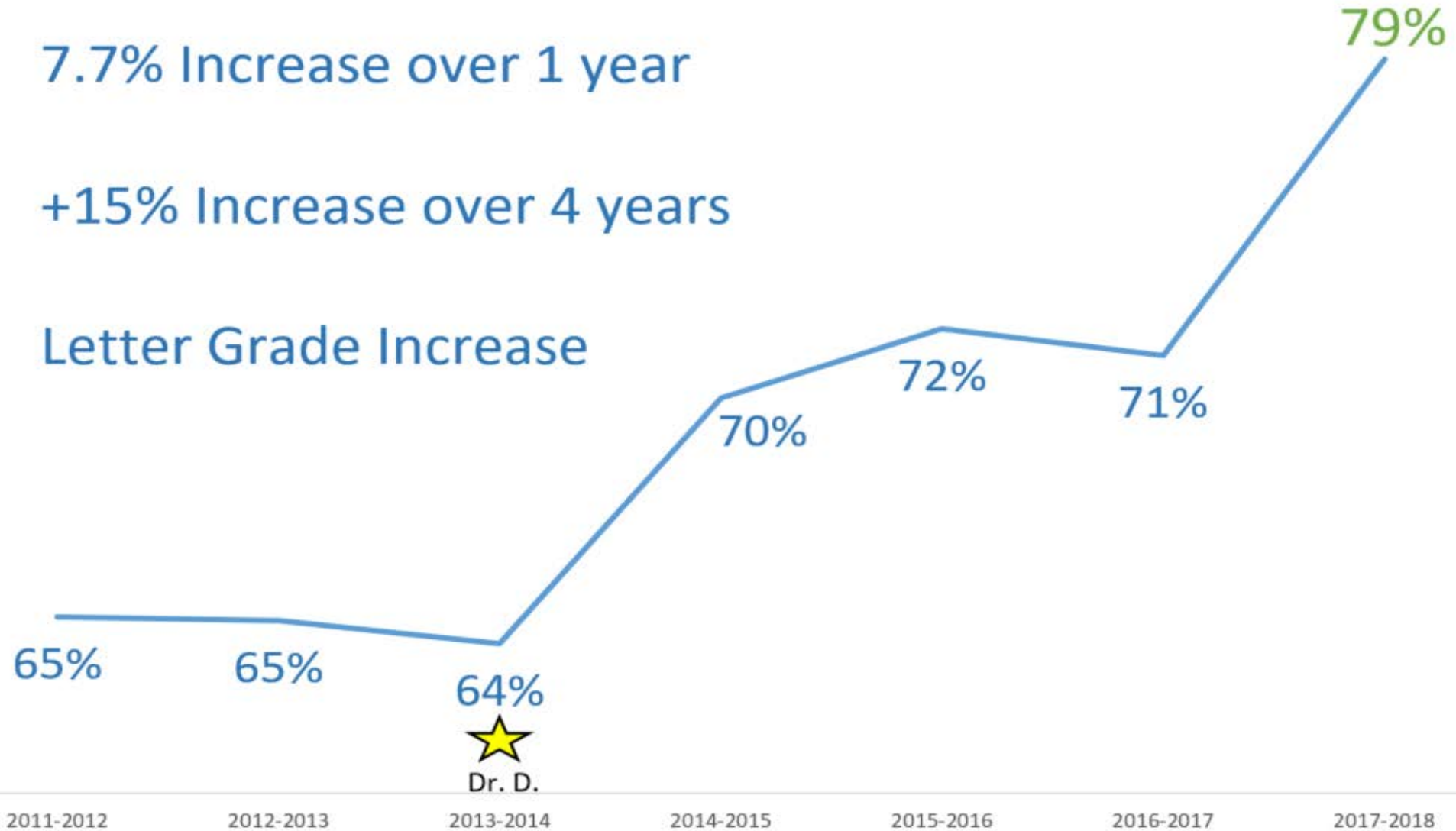
Graduation Rate

All Students

7.7% Increase over 1 year

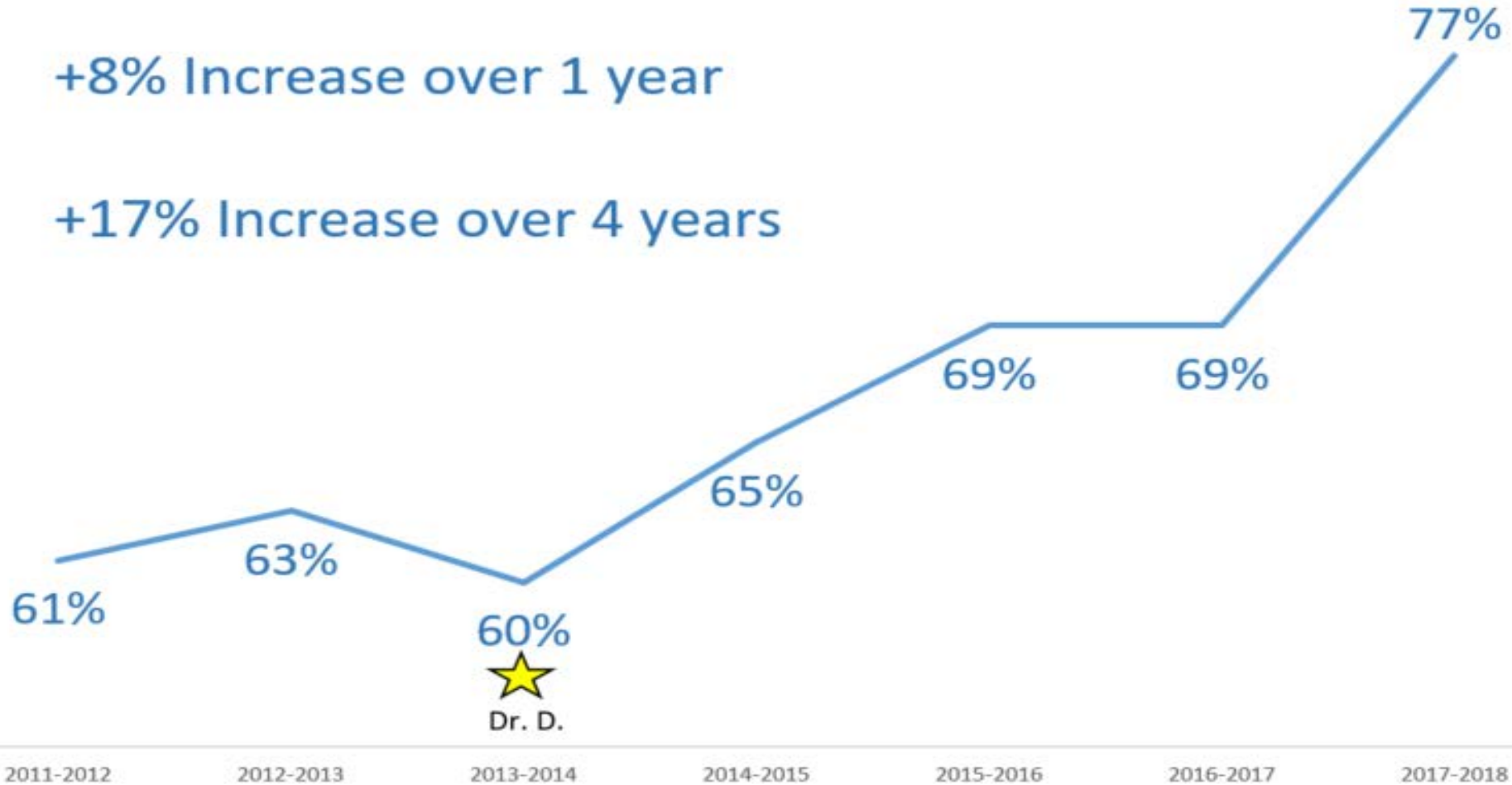
+15% Increase over 4 years

Letter Grade Increase



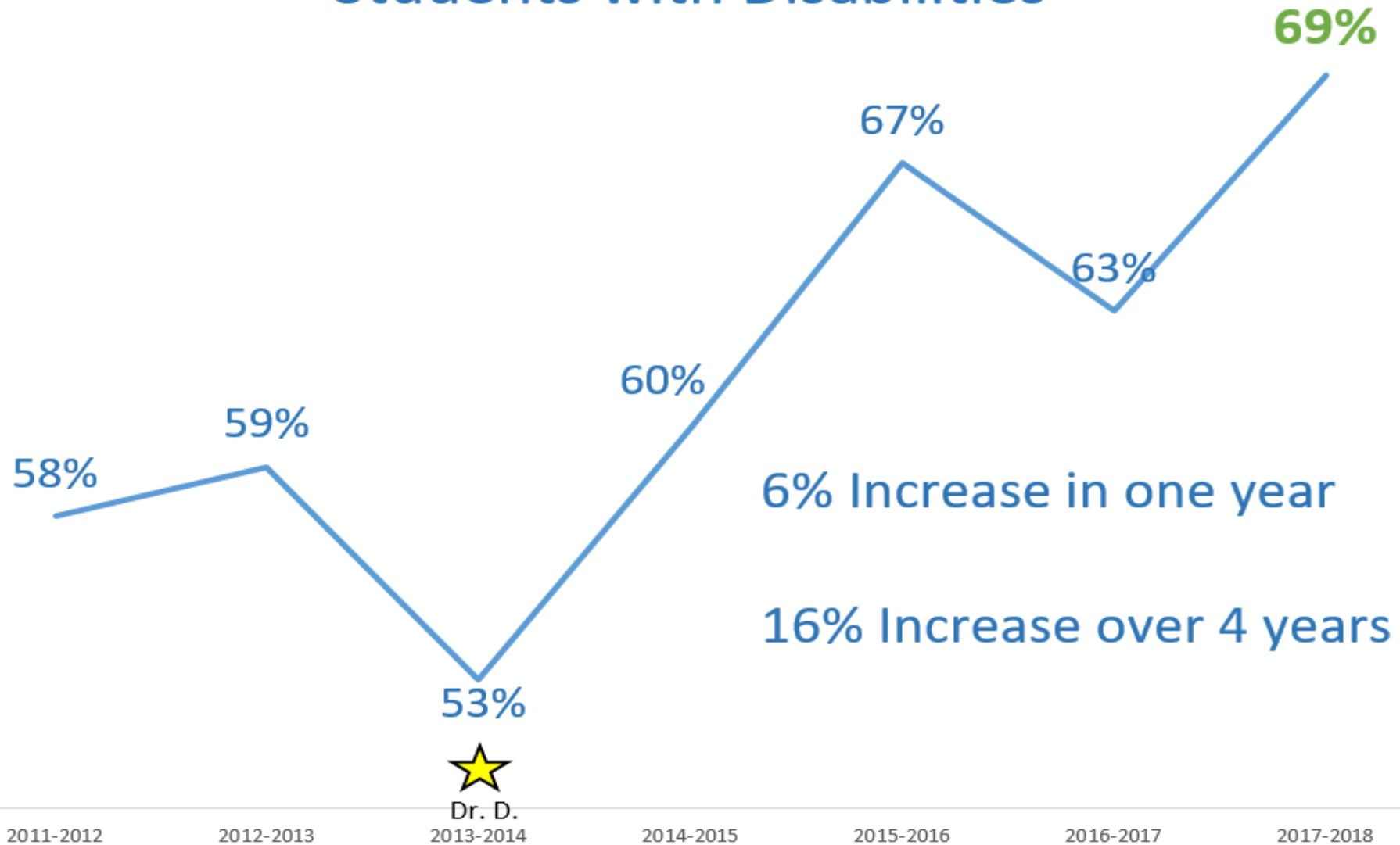
Graduation Rate

Economic Disadvantaged



Graduation Rate

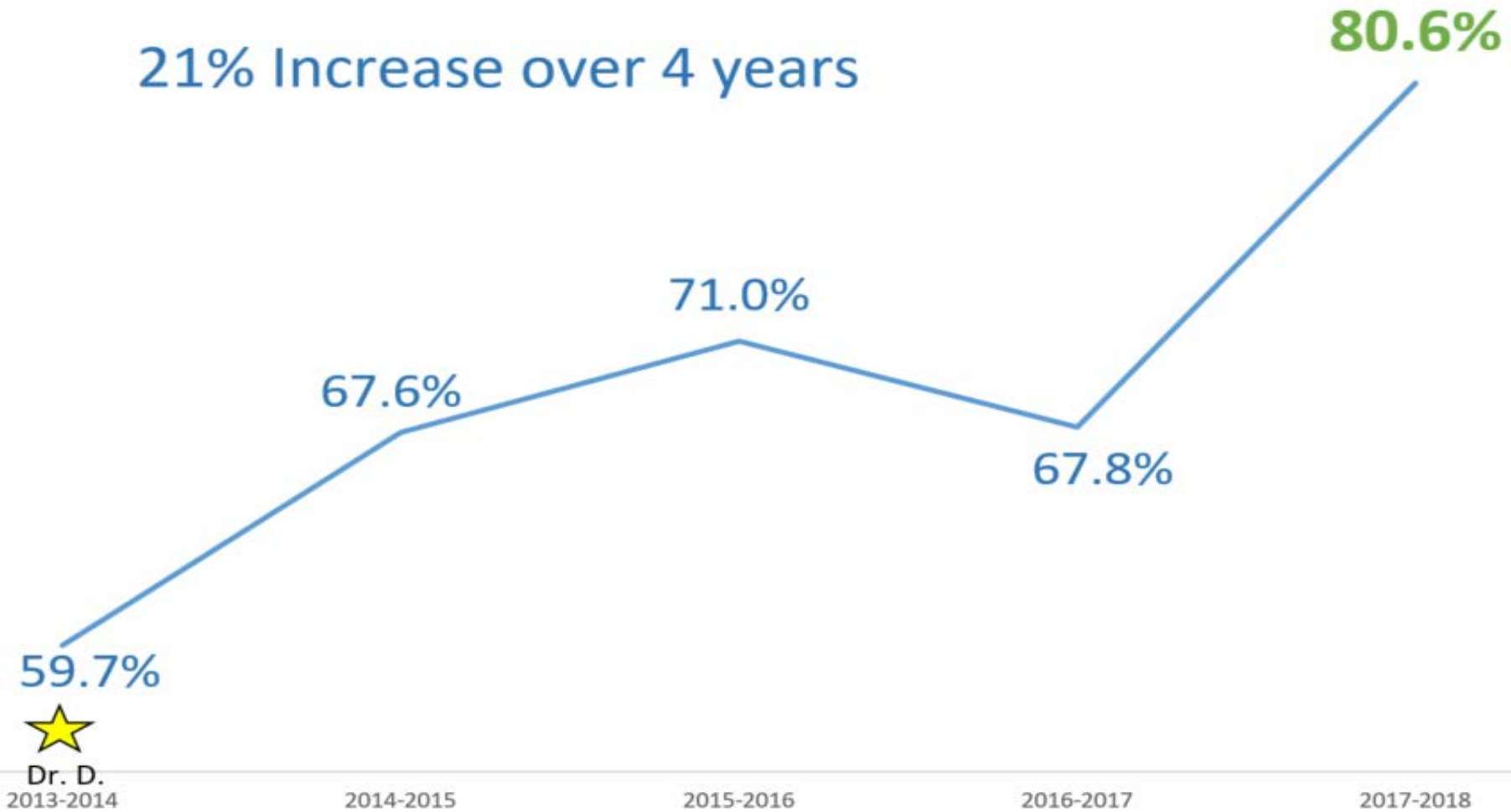
Students with Disabilities



Graduation Rate

Black Non-Hispanic

21% Increase over 4 years



Dr. D.

2013-2014

2014-2015

2015-2016

2016-2017

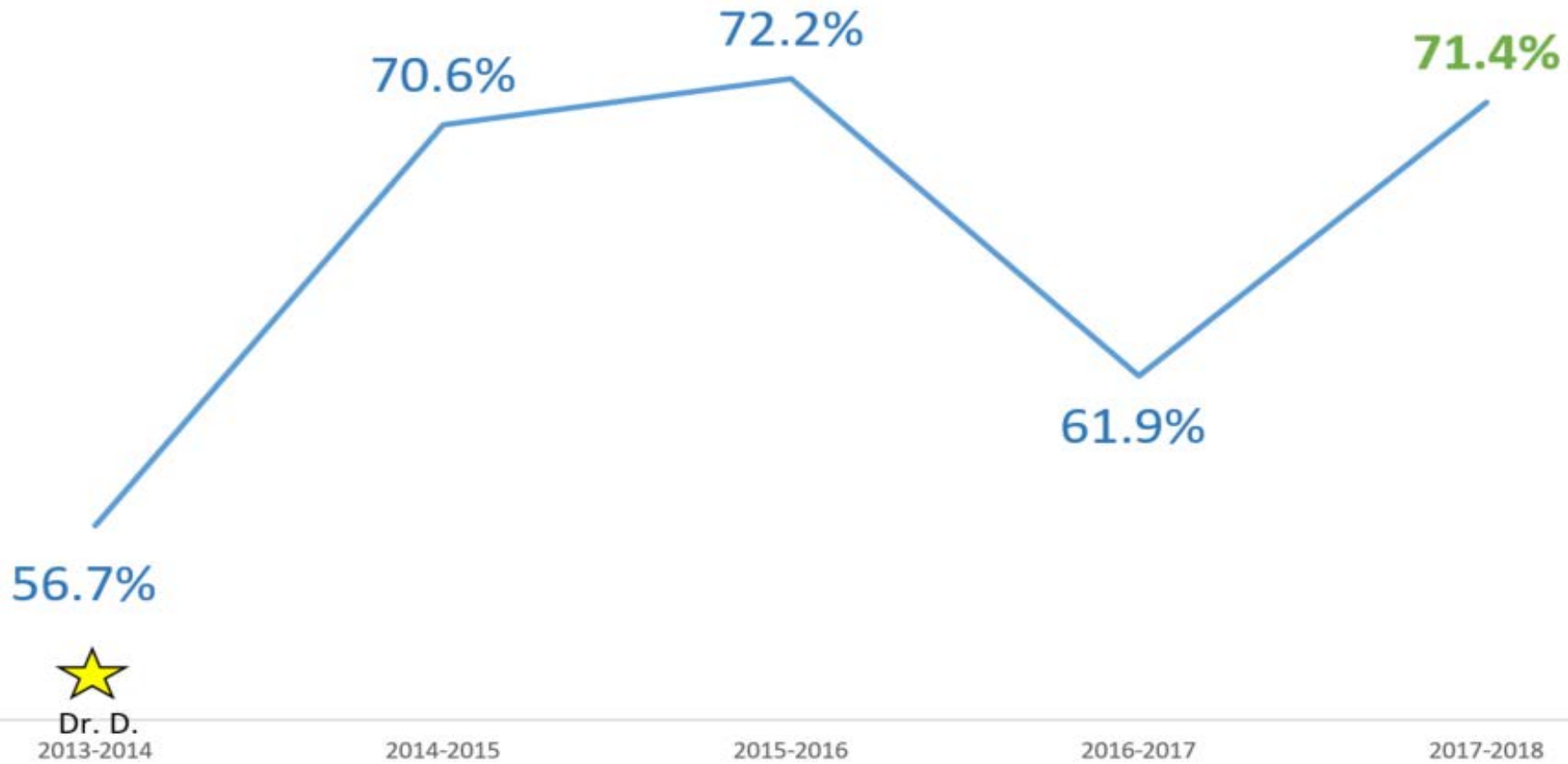
2017-2018



Graduation Rate

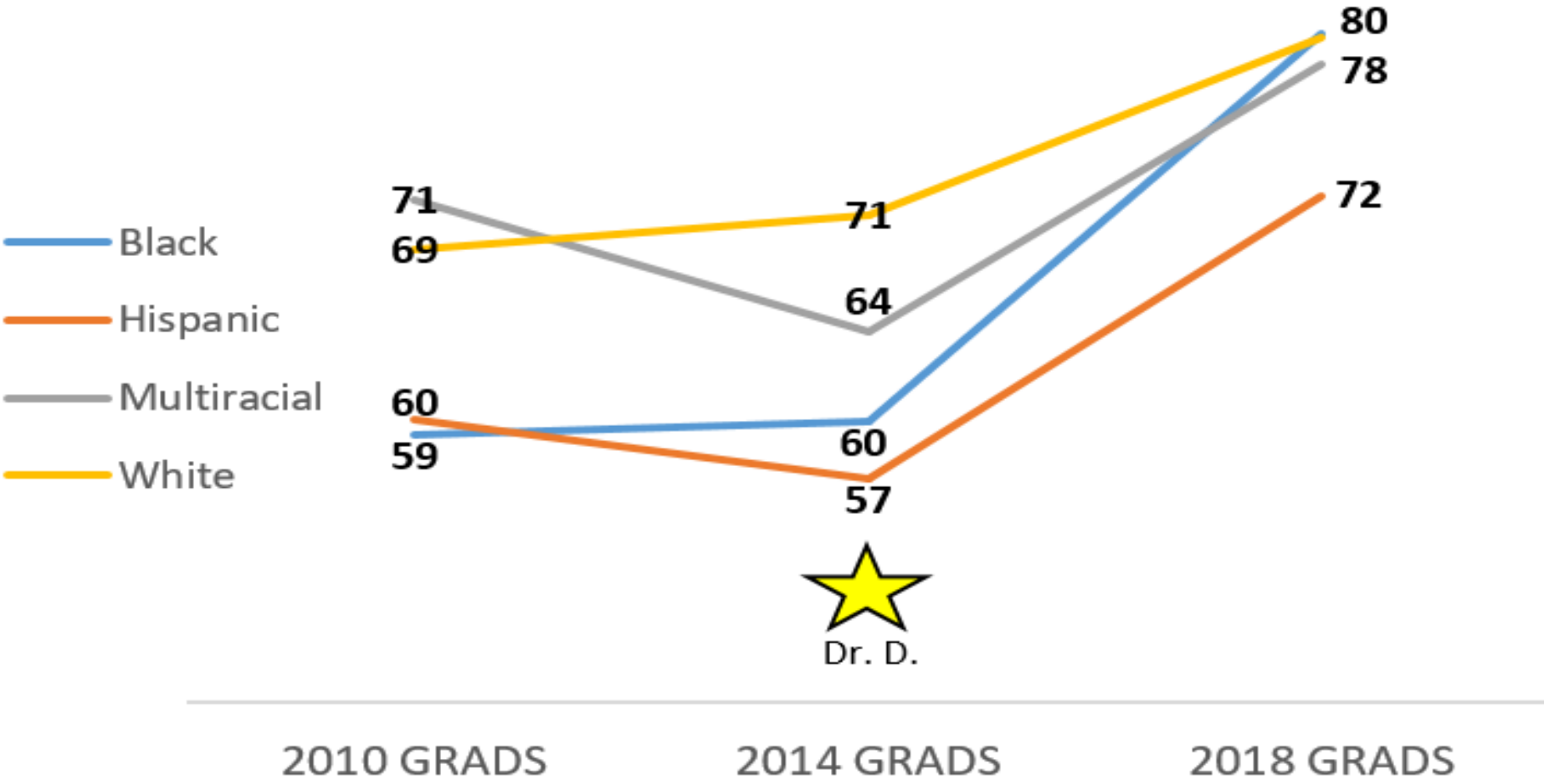
Hispanic

14% Increase over 4 years



Graduation Rate - Gap Closing

HISTORICAL 4YR GRADUATION RATE



Dr. D.

